

Chartridge Park are delighted to offer this brand new, single unit, 2 bedroom, Pathfinder park home to the market. This park home offers accommodation comprising of: 2 bedrooms, fitted kitchen, fitted bathroom, lounge/diner with stunning countryside views. Hallway with 2 storage cupboards. Lawned garden on sides, and large parking bay for one car.



### **LOUNGE/DINER/KITCHEN AREA**

Vaulted ceiling throughout. Lounge with 2 two seater sofas with cushions, 2 fixed windows with curtains and a roman blind, 1 window with opener and curtains. Dining area with table and 4 chairs, 1 window with opener and curtains, french doors with full length curtains looking out onto stunning countryside views. Sand coloured carpet and ceiling lights with shades. Electrical sockets, 2 radiators, room thermostat, TV point, smoke alarm and Co2 detector.



White gloss kitchen units and handles, with duropal oak worktop and up-stand. Stainless steel sink/drainer with mixer tap. Oven, gas hob with splash-back and extractor hood. Integrated washing machine, fridge/freezer and dishwasher. Window with opener and venetian blind. Electrical sockets and radiator. Heating: LPG Baxi combi boiler.



**BEDROOM 1** with Divan double bed, oak wardrobe and 2 oak bedside cabinets. Sand coloured carpet, ceiling light with shade. Window with openers and curtains. Electrical sockets, radiator and TV point. Door leading to bathroom.

**BEDROOM 2** with 2 Divan single beds, oak wardrobe and an oak bedside cabinet. Sand coloured carpet, ceiling light with shade. Window with openers and curtains. Electrical sockets, radiator and TV point.



### **BATHROOM**

White bath with side panel and taps. Chrome kiri satinjet shower with screen, surrounded by beige ceramic tiling waterproof panels. Oak vanity unit with basin, mixer tap and mirror. Toilet suite with roll holder. Radiator with towel rail. Extractor fan with timer. Privacy window with opener and venetian blind. Stainless steel down-lighters and Leoline woodmark vinyl flooring.

### **COUNTRYSIDE VIEW & PARKING SPACE**

Stunning countryside views to the rear of the property. Lawned garden on both sides with a slate stone border and a large parking space for one car.

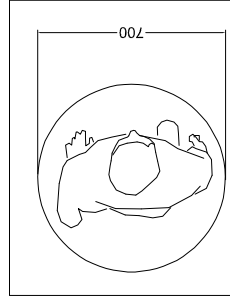
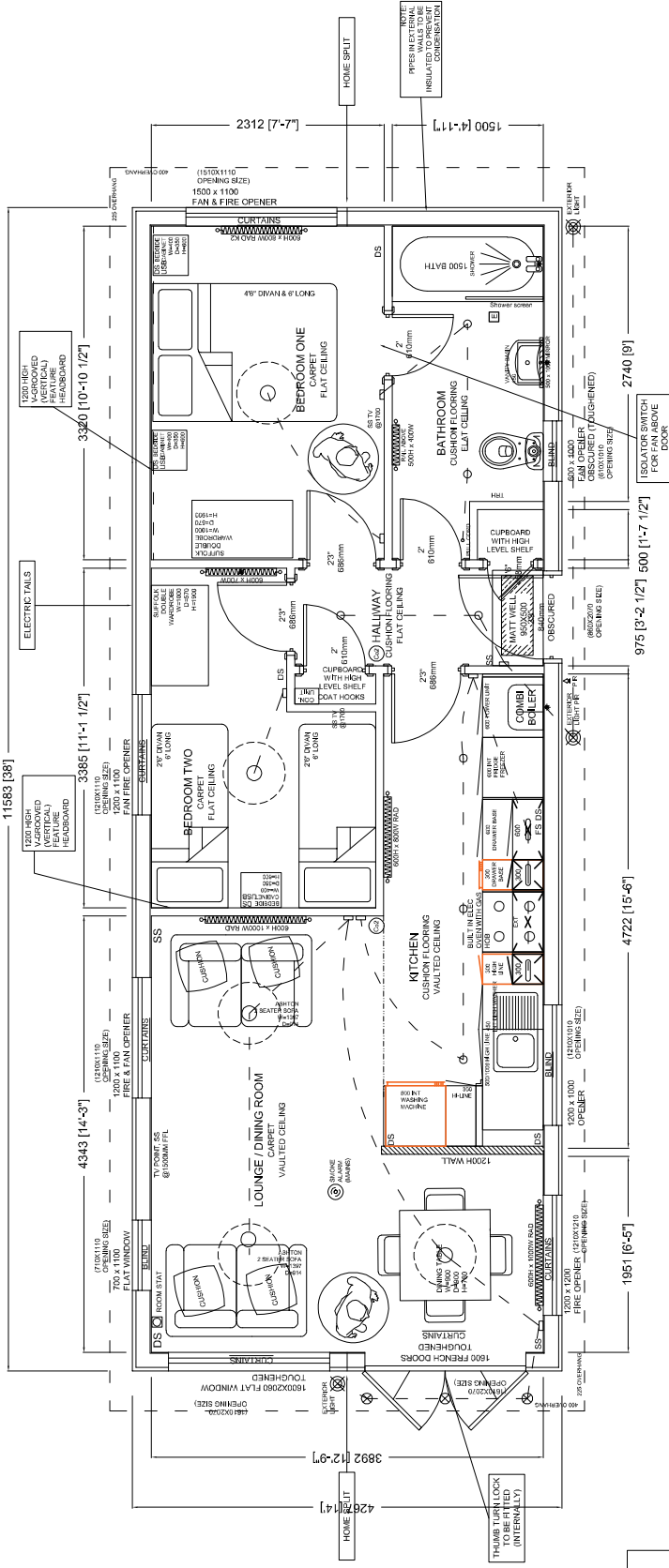
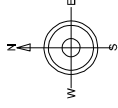


**For viewings of 74 Old Sax Lane**  
**Please contact the Chartridge Park Office on: 01494 783119**  
**or by email: [sales@chartridgeparklimited.co.uk](mailto:sales@chartridgeparklimited.co.uk)**

*Please consider the environment before printing this brochure*

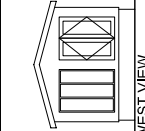
CUSTOMER SIGN OFF

SIGNATURE: ..... DATE: .....

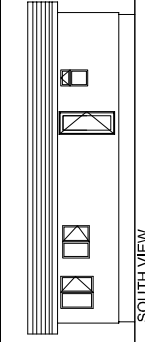


ELEVATIONS @ 1:200

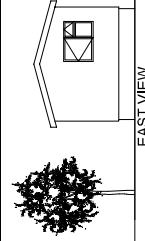
(ILLUSTRATION PURPOSES ONLY)



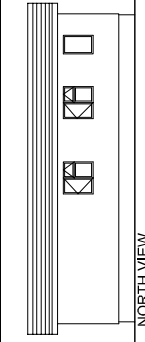
WEST VIEW



SOUTH VIEW



EAST VIEW



NORTH VIEW

PARK NAME  
CHARTRIDGE PARK

CUSTOMER

PURPOSE OF ISSUE  
BUILD ISSUE

JOB NUMBER  
1742

Scale (@ A3)  
1:50

Date  
19TH JUN 2018

VERSION  
V4

REVISIONS  
V1 NEW DRAWING  
V2 CHANGES AFTER REVIEW  
V3 SPEC READS  
V4 CHANGE REQUEST

DRAWN BY:  
AS  
AS  
AS  
AS

DATE:  
30/03/18  
04/05/18  
18/05/18

NOTES:



WWW.PATHFINDERHOMES.CO.UK

THE DRAWINGS ARE THE PROPERTY OF PATHFINDER HOMES. UNLESS OTHERWISE STATED, ALL RIGHTS ARE RESERVED. NO PART OF THESE DRAWINGS IS TO BE REPRODUCED, COPIED, OR TRANSMITTED IN ANY FORM OR BY ANY MEANS, WITHOUT THE WRITTEN PERMISSION OF PATHFINDER HOMES. ANY UNAUTHORIZED REPRODUCTION OR USE OF THESE DRAWINGS IS STRICTLY PROHIBITED. NOT ALL WORK IS TO COMPLY WITH BS 3852

DRAWING  
38'X14' - TUSCANY - 2 BED